

PLASTIC SHEETING 4X60 M

PLASTIC SHEETING



FUNGI / MOLD RESISTANT



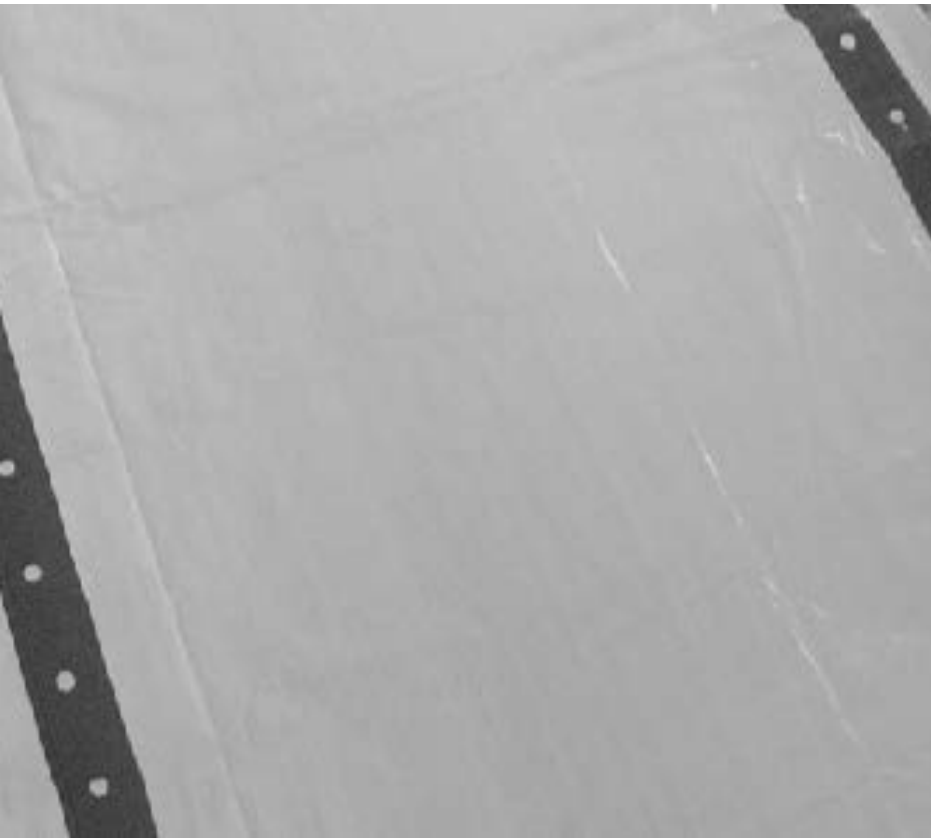
FLAME RETARDANT
CPAI-84 / 6



UV RESISTANT



DISINFECTABLE



UNHCR/UNICEF STANDARD

CUSTOMER REFERENCE

HSHETARPW460

DESCRIPTION

- » Reinforced flexible tarpaulins for temporary shelter or protection
- » Made of woven HDPE black fibres

MAIN MATERIALS

MATERIAL	Woven HDPE black fibers fabric laminated on both sides with LDPE coating with 6 reinforced bands made of HDPE in the length Prepunched 8 mm holes on the 2 side bands at 0,1 m intervals
UV RESISTANCE	Max. 20% loss on original tensile strength and not less than 475N after 1500 UV exposure (UVB 313nm peak)
TEMPERATURE RESISTANCE	-20 to 80°C
TENSILE STRENGTH	Min. 500 N and 15% to 25% elongation in warp and weft as per ISO 1421-1 Min. 700 N inside the reinforcement bands as per ISO 1421-1
TEARING STRENGTH	Min. 100 N as per ISO 4674-1B
COLOR	White with dark grey reinforcement bands Inner black fibres to ensure opacity

PLASTIC SHEETING 4X60 M

PLASTIC
SHEETING

DIMENSIONS

LENGTH x WIDTH	4 x 60 m
WEIGHT	190 g/m ² ± 20 g, plus 10% for the reinforcement bands (approx. 5 kg)

PACKING

PACKING UNIT (P.U.)	Bale
QTY P.U.	1 piece
P.U. MEASUREMENTS	DIMENSIONS: 115 x 80 x 12 cm WEIGHT: 50 kg VOLUME: 0,11 m ³
QTY PALLET	9 bales per pallet
PALLET MEASUREMENTS	DIMENSIONS: 115 x 75 x 122 cm WEIGHT: 434 kg VOLUME: 1,05 m ³
LOADING	PER 20 FT DC 300 pcs unpalletized 270 pcs palletized PER 40 FT DC 600 pcs unpalletized 540 pcs palletized PER 40 FT HC 600 pcs unpalletized 540 pcs palletized

INDICATED WEIGHTS AND VOLUMES ARE FOR YOUR INFORMATION ONLY AND MAY VARY ACCORDING TO PRODUCT SPECIFICATION.
FOR ALL DIMENSIONS AND WEIGHTS A TOLERANCE OF 3% IS APPLIED

STOCKS

Belgium, China