

RED[®]

Rapid Emergency Dome

EFFICIENT SHELTER SOLUTION



ALPINTER 

RED® CONCEPT

The **RED®** tent was developed by Alpinter for the Swiss Red Cross after the 2011 Haiti earthquake.

Losing as little time as possible is important.

In heavily hit areas, families are often in urgent need of aid and shelter. But immediately after the emergency, it's hard to make a correct assessment of the devastation. Besides, roads and bridges are likely to be damaged, making it hard to reach the areas that need help and shelter the most.

Alpinter therefore developed a **two-phase approach**:

Phase 1: The focus is on creating a **fast, efficient and budget-friendly temporary shelter solution** to help the affected populations as soon as possible. The **RED®** tents available in our worldwide stocks are perfectly suited for initial emergency responses.

Phase 2: After a certain period of time, humanitarian agencies have the time to do the correct **assessments** and can focus on **adapted shelter solutions** (permanent shelter, toolkits, ...), tailored to the needs at that moment and to the local context.



CASES

■ HAIYAN 2013

Typhoon Haiyan was **one of the strongest tropical cyclones** ever recorded in Southeast Asia. Alpinter delivered **over 1000 RED® tents**. A field assessment six months later showed that **RED®** tents were still used by communities and were in good condition, despite the exposure to humidity, heavy rains, sea salt and high temperatures.



■ NEPAL 2015

In April 2015, the **Nepal earthquake** left hundreds of thousands of people homeless. With the local infrastructure severely damaged, it had proven very difficult to distribute the standard family tents. However, due to its **light weight** (29 kg) and its compact packing, the **RED®** could be carried by foot and therefore it were the only tents that could **reach the most remote villages**.



■ IRMA AND MARIA 2017

In September 2017, several **Caribbean islands** were hit by two of the most destructive **hurricanes** in recent years. The first deliveries of **RED®** tents reached St Marteen by charter flight from Alpinter Belgian stocks just 48 hours after the hurricane struck.



RED®'S PERFORMANCE AND CHARACTERISTICS

HEALTH AND SAFETY



The **RED®** tent is completely made of **synthetic fabric** (ICRC/IFRC plastic sheeting standard). In case of an outbreak of a viral epidemic (cholera, ebola, ...), it can be easily and entirely cleaned and disinfected. There is **no additional surface treatment** applied on the PE. This limits the exposure of harmful chemicals to the end-user and avoids chemicals that are rained or washed off from the tent to pollute the ground.

STABILITY AND TENSIONING



The **RED®** guylines include an elastic **shock absorber** and anti-slip **metal guyrunner** for better tensioning. Both help the tent pegs stay in place and contribute to its stability in high winds.

TEMPERATURE CONTROL



The **3-layer blackout PE fabric** efficiently **reflects light** (visible and infrared), providing superior temperature control inside the tent. The large **windows and ceiling ventilations** ensure a good ventilation in the tent. The **optional inner liner with central pole** makes the **RED®** tent also suitable for colder climates.

SHADE ZONES



The **4 window flaps** on the outer tent can be used to create large shade zones and living space around the tent (> 4 m²).

EASY TO CARRY AND SET UP



With a weight of only 29 kg, the **RED®** tent can be **carried by 1 person** and set up easily by 2 people in only 15 minutes. The self-standing design needs less space and can be used everywhere, including warehouses or urban spaces.

SLOW FLAME SPREAD



The **RED®** tent is made of polyethylene (PE). Compared to classic canvas fabrics, PE will **slow the spread of fire** without any FR chemical treatment.

LIFESPAN & STORAGE



Being 100% synthetic, the **RED®** tent is not sensitive to rotting and has minimum **5 years of shelf life** under normal warehousing conditions. The tents have a minimum **lifespan of 1-2 years**, even in harsh climates and conditions.

EFFICIENT SHELTER DISTRIBUTION



Its light weight makes the **RED®** tent a **budget and eco-friendly solution** for initial emergency response, because it reduces both shipping costs and the carbon footprint.



MORE ABOUT RED®

The **RED®** tent is a family tent designed and produced by Alpinter. The tent is created to give shelter to a family of **5 people** in emergency situations. The tent is **100% synthetic**, made of PE following ICRC/IFRC standards.

The tent includes: flysheet, outer tent, groundsheet, poles, accessories and hammer.



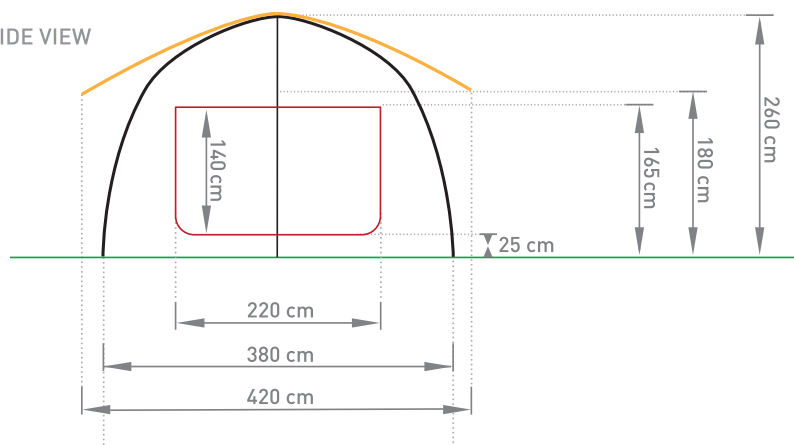
29 kg

PACKING

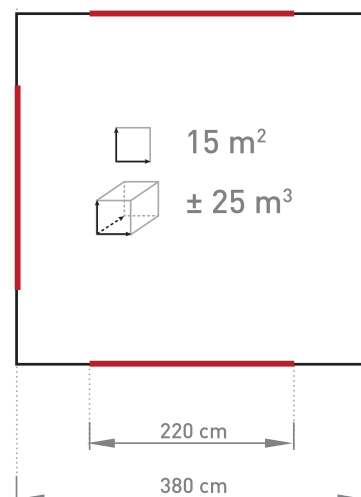


0,12 m³

SIDE VIEW



TOP VIEW



RED®'S OPTIONAL INNER CABINS

Inner cabin(s) can be used to improve insulation and comfort in the tent.

A **half inner cabin** allows the tent to be split into a vestibule (to enter the tent and store items) and a sleeping area. **2 half inner cabins** create 2 separate sleeping areas in the tent. A **complete inner cabin with central pole** adds an extra layer to the tent and makes it suitable for colder climates.

If requested, other options (like solar kit, lighting kit, ...) can be added upon request.



RED®'S MATERIALS

TENT MATERIAL

The flysheet, outer tent and groundsheet are made up of woven PE, following the **ICRC/IFRC standard**.

FRAME

The frame consists of a hybrid system of 4 metal poles, 2 red fibreglass roof rods and 4 black fibreglass horizontal connection rods.



Established in 1988, Alpinter is headquartered in Belgium with offices worldwide. We develop, produce and supply core relief items. Our tent designs have set the standard for humanitarian purposed tents and are adopted by the world leading NGO's.

Our products are subjected to rigourous field and laboratory testing. We turn questions into answers by working closely with you.

We hold stock in strategic locations worldwide.
Thanks to our dedicated logistics service, we're available 24/7.
We can respond quickly to any emergency worldwide.

CONTACT US TODAY



**SHELTER
STARTS
WITH US**

HEAD OFFICE

ALPINTER BELGIUM

CHARLES DE GAULLESTR. 7
B-9600 RENAIX - RONSE | BELGIUM | **EUROPE**
Tel: +32 (0)55 23 17 54

REGIONAL OFFICES

ALPINTER BULGARIA

35-37 KLOKOTNITZA ST | AP.1
1233 | SOFIA
BULGARIA

ALPINTER DUBAI

INTERNATIONAL HUMANITARIAN CITY
BUILDING N° 1 | SECOND FLOOR | OFFICE 207
DUBAI INDUSTRIAL CITY | PO BOX 506047
DUBAI | U.A.E. | **MIDDLE EAST**

ALPINTER UGANDA

PLOT 224-226, KYEYUNE ROAD | KIGGUNDU ZONE
KANSANGA | PO BOX 25525
KAMPALA | UGANDA | **EAST AFRICA**

ALPINTER ASIA

ALPINTER ASIA LTD.
RM 1902, HUA FU COMMERCIAL BLD.
111 QUEENS ROAD WEST
SHEUNG WAN | HONG KONG | **ASIA**

PRODUCTION SITE & PARTNER



info@alpinter.com | www.alpinter.com